

HILLSBORO AIRPORT ENVIRONMENTAL ASSESSMENT

Runway Safety Area Improvements

Project Update Webinar

January 28, 2021

Zoom Introduction

- We want to hear your questions!
- You will be muted without video throughout the webinar
- Submit questions in the Q&A
- Share technical issues in the chat
- Raise hand to ask question verbally



Chat



Raise Hand



Q&A

¿Quieres explicación en español?

- Intérprete para hoy si lo necesitara Frances Portillo
- El sitio web hio-ea-esp.com tiene todas la informacion
- Para información más detallada haga una cita en el cuadro del chat

Q&A

All questions (1)

My questions

Lee 01:54 PM

Will there be a follow-up session?



Comment

Type your question here...

Meeting Purpose

- Share updates as we move towards a draft Environmental Assessment
- Answer your questions for upcoming public comment period



Si tiene alguna pregunta o comentario puede ingresarlo en idioma español en el cuadro del chat. El sitio web hio-ea-esp.com tiene todas la informacion

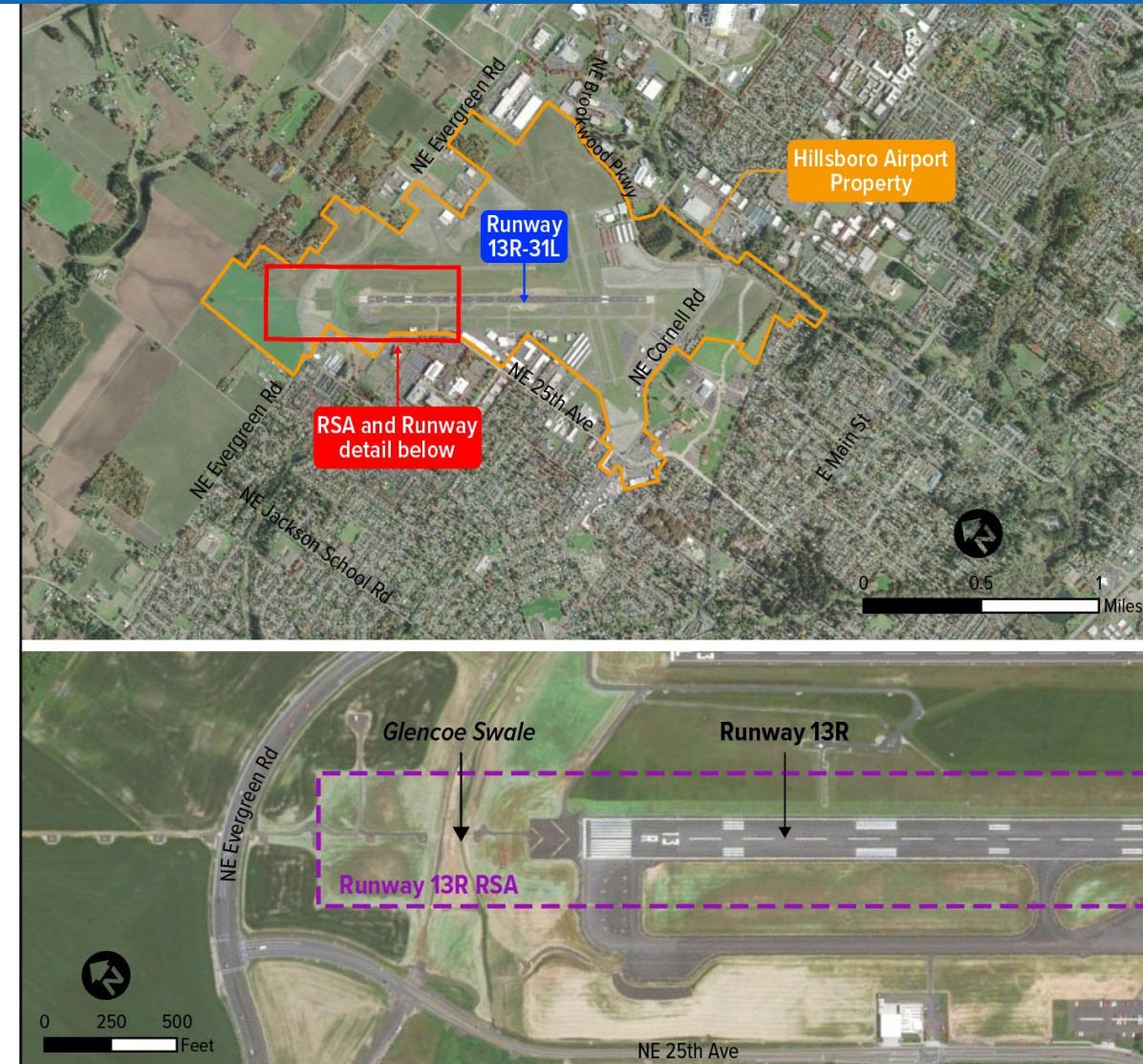
Webinar Agenda

- Welcome
- Project background
- Purpose and Need
- NEPA process and schedule
- Update on the Proposed Action
- Engineering update
- Next steps
- Q&A

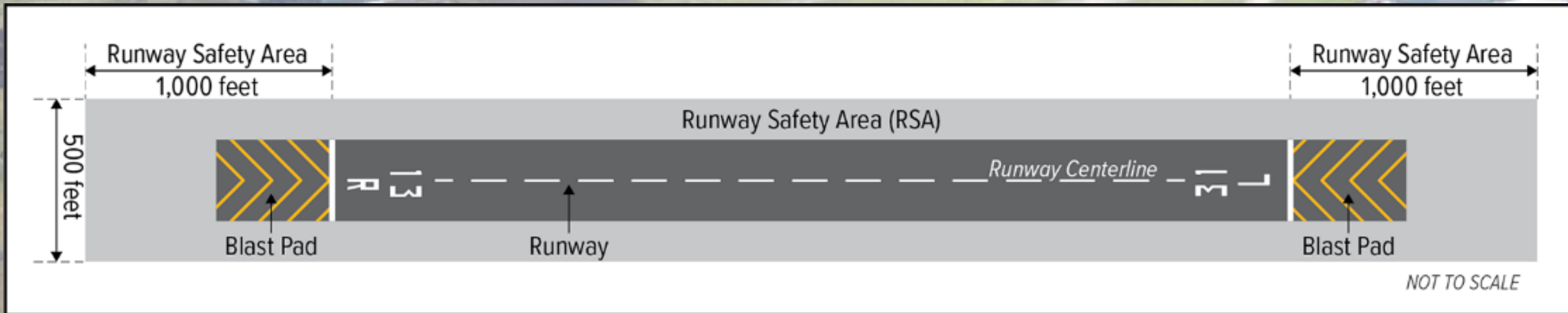


Project Location

- RSA located on north end of Hillsboro Airport property

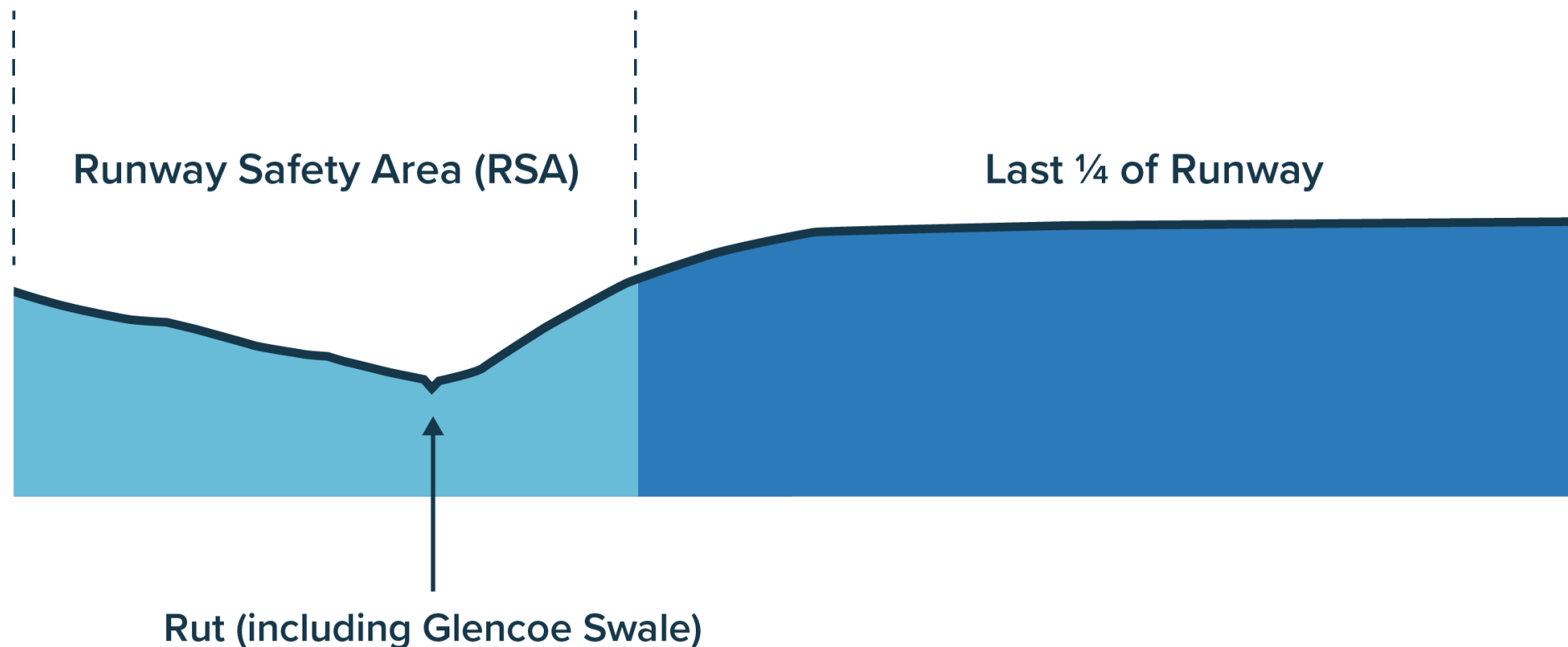


Runway Safety Area



Purpose and Need

CHANGES IN SURFACE GRADE THAT NEED TO BE CORRECTED



Cross section of project area: north end of Runway 13R-13L. Illustration not to scale.

National Environmental Policy Act (NEPA) Process

	TECHNICAL INPUT	NEPA MILESTONES	COMMUNITY INVOLVEMENT
2018	Previous studies, existing conditions	Purpose and need statement	
2019		Development of alternatives	
		Screen range of alternatives	
		Identify proposed action for evaluation in environmental assessment	Public Information Meeting
		Preliminary engineering design	
2020		Conduct detailed technical studies	
2021		Prepare draft environmental assessment	Webinars
		Public comment on draft environmental assessment	Draft EA Public Hearing
		Finalize environmental assessment	
		FAA issues environmental finding	
2022	Environmental permitting and regulatory agency coordination	NEPA PROCESS ENDS	
2023		Final design	
		Construction permitting	
		Construction	

Update on Proposed Action

Key Elements of the Proposed Action:

- Maintains existing threshold locations
- Maintains existing 6,600-foot runway length
- Conveys Glencoe Swale under the runway safety area (RSA) in a pipe or conduit
- Regrades Runway 13R end and RSA



Map of proposed project elements

LEGEND

- Project limits
- Runway grade correction
- Blast pad reconstruction
- Taxiway A grade adjustment
- Taxiway A1 reconfiguration
- Taxiway A2 removal
- RSA grade correction
- Excavated compensatory flood storage area
- Utility access road
- NAVAID improvements
- Existing Glencoe Swale
- Glencoe Swale re-alignment
- Culvert
- Stormwater pipe replacement
- Water quality filter strips

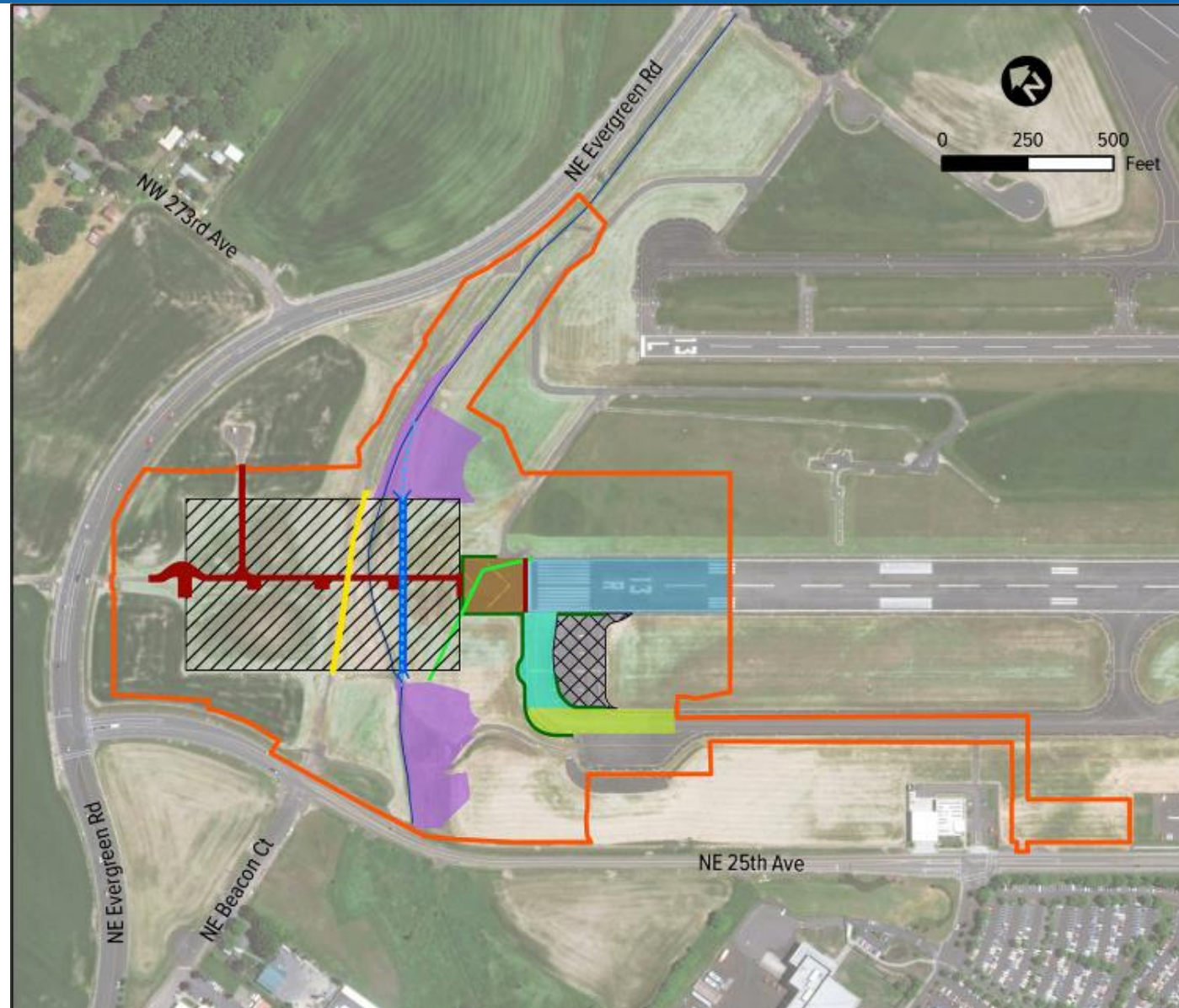
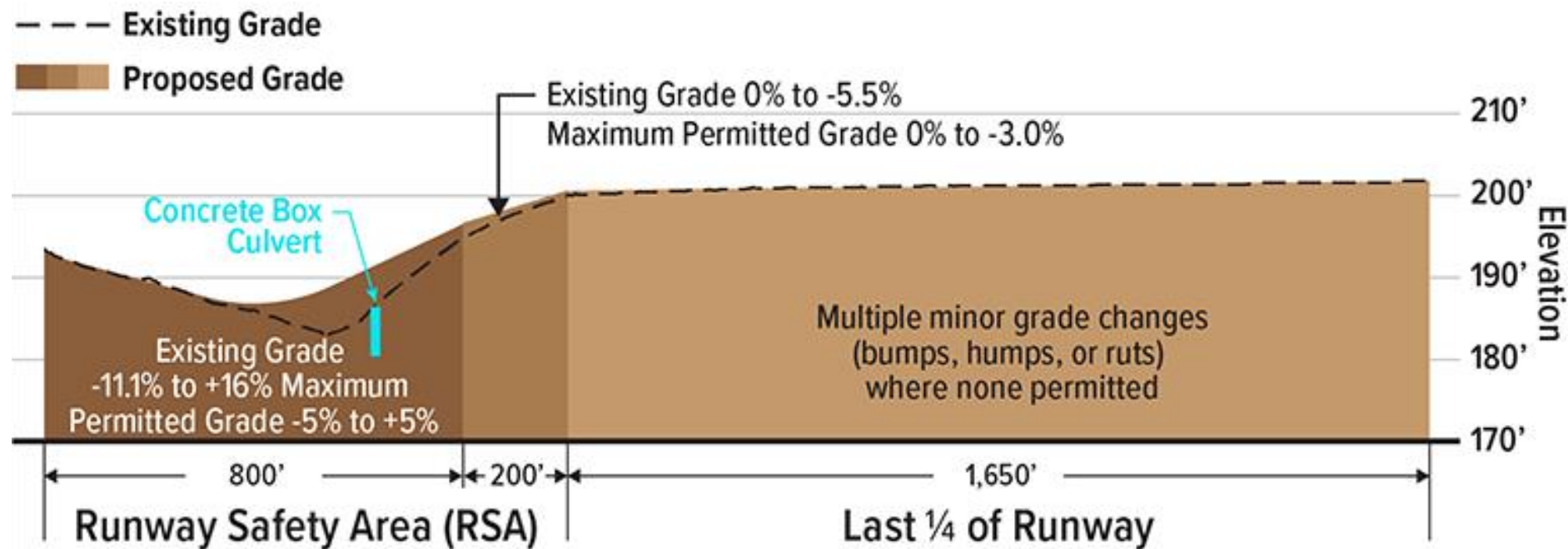


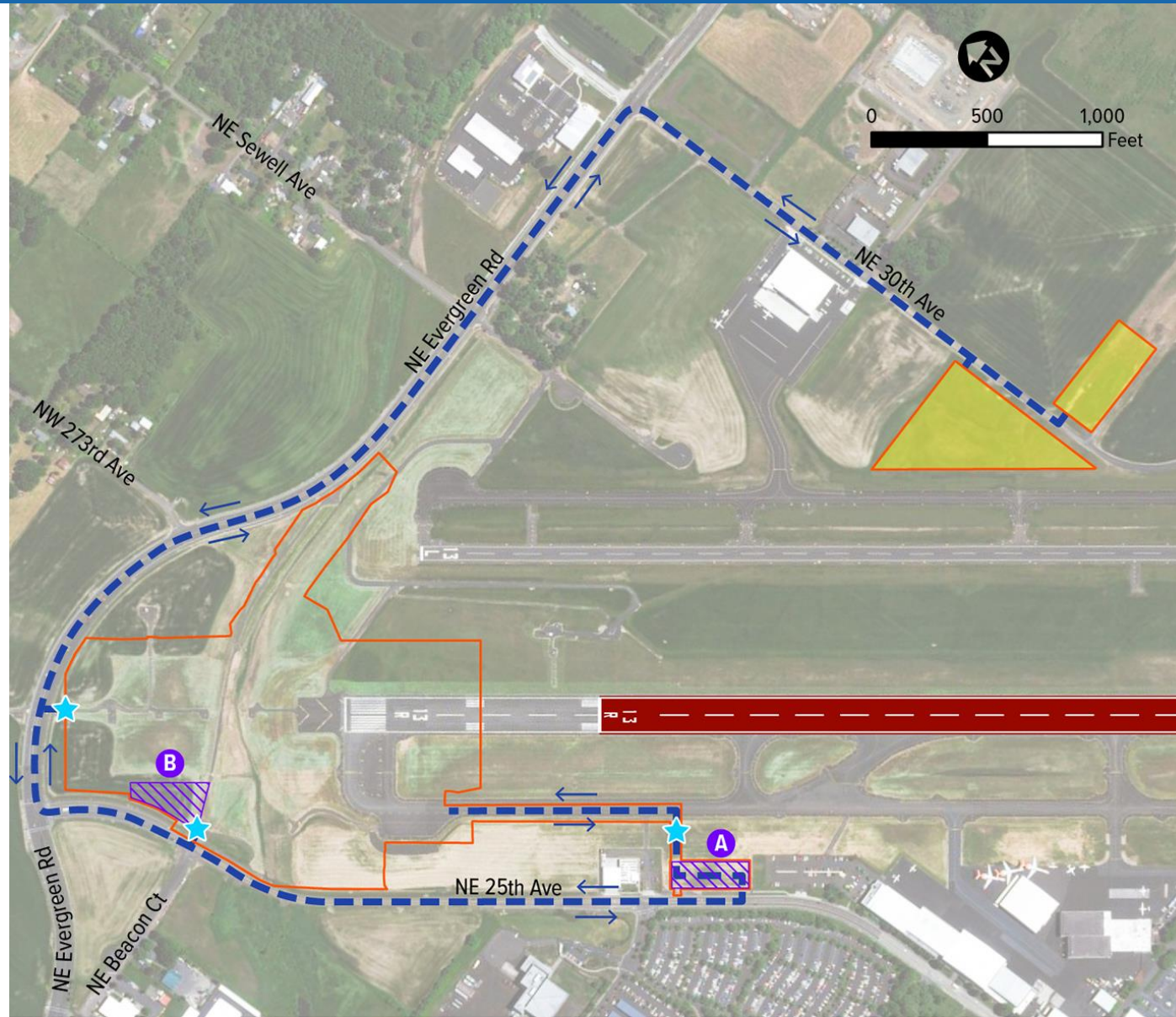
Diagram showing corrections in surface grade



Map of proposed construction elements

LEGEND

- Project limits
- Staging areas
- Haul routes
- Stockpile areas
- Site access
- Temporary shortened runway



Next Steps

Next steps include:

- Complete analysis of potential impacts to environmental resources
- Publish Draft Environmental Assessment
- Draft Environmental Assessment comment period



QUESTIONS and ANSWERS

THANK YOU

Jayson Shanafelt
Community Affairs Outreach Manager
Jayson.Shanafelt@portofportland.com

Maureen Minister
Environmental Conservation Manager
Maureen.Minister@portofportland.com